

# Medicaid and the State Budget!

## HB 18-1322

May 24, 2018

Northern Colorado Health Sector Partnership



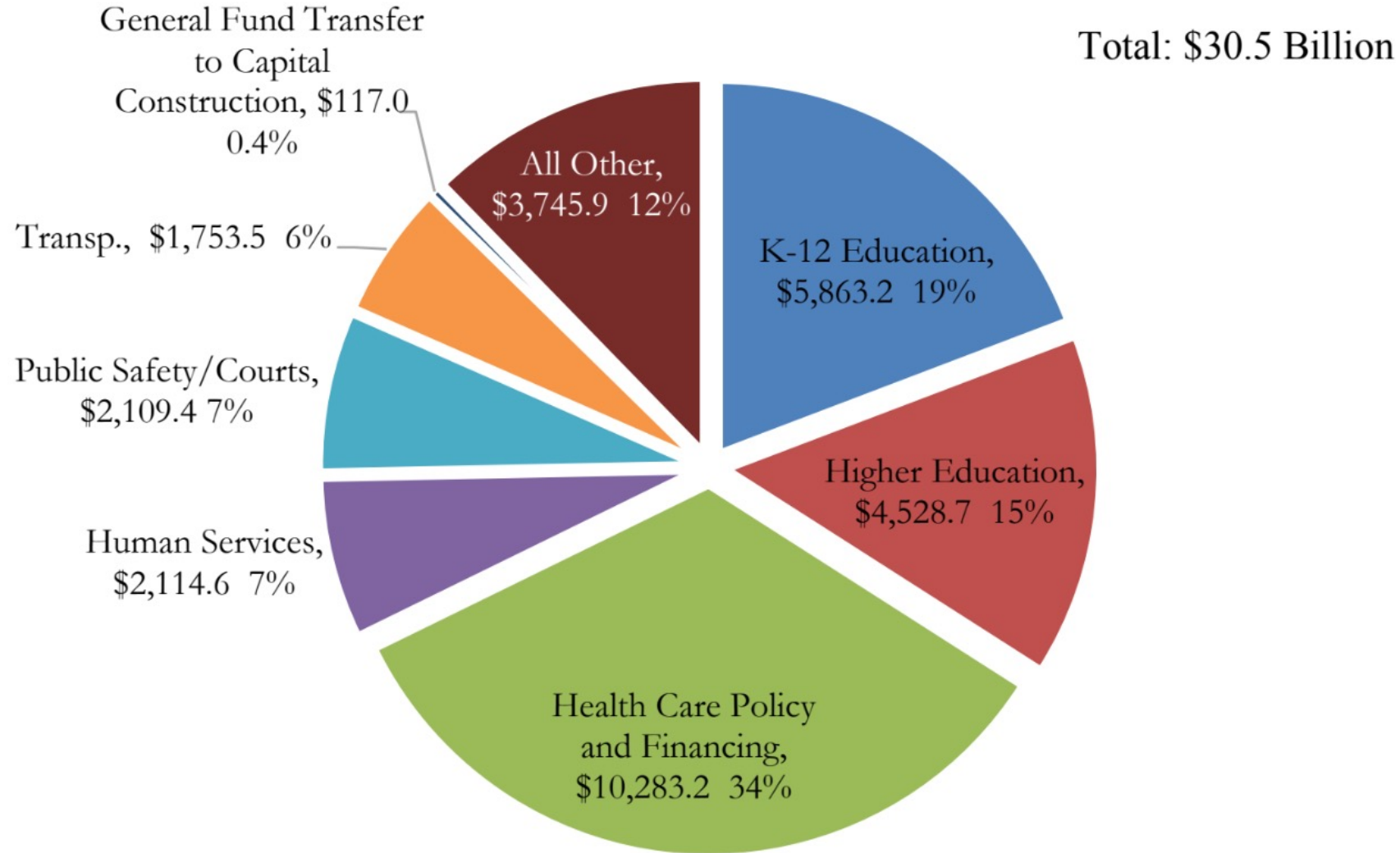
# About NCLA

- ▶ Established in 1992 by the Loveland, Greeley and Fort Collins Chambers of Commerce
- ▶ 23 Voting Members:
  - ▶ Six from the membership of the three Chambers
  - ▶ The three Presidents/CEOs of the Chambers
  - ▶ The President of Upstate Colorado
  - ▶ The CEO of the Northern Colorado Economic Alliance

# NCLA's Priorities

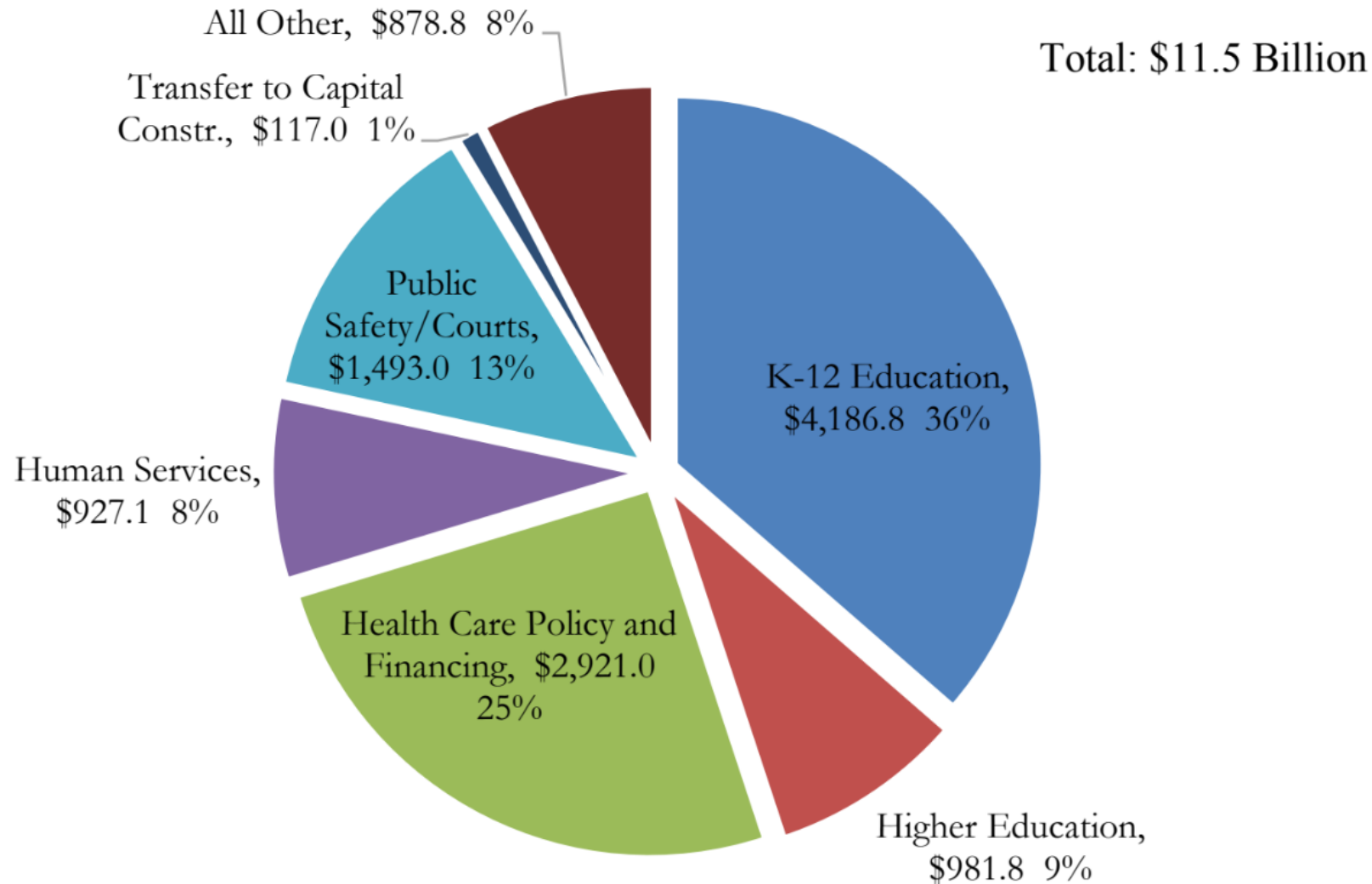
- ▶ Energy
- ▶ Water
- ▶ Workforce Development
- ▶ Transportation
- ▶ Health Care (Added in Aug 2017)

# FY 2018-19 Total Funds Request (In Millions) and Percent of Total



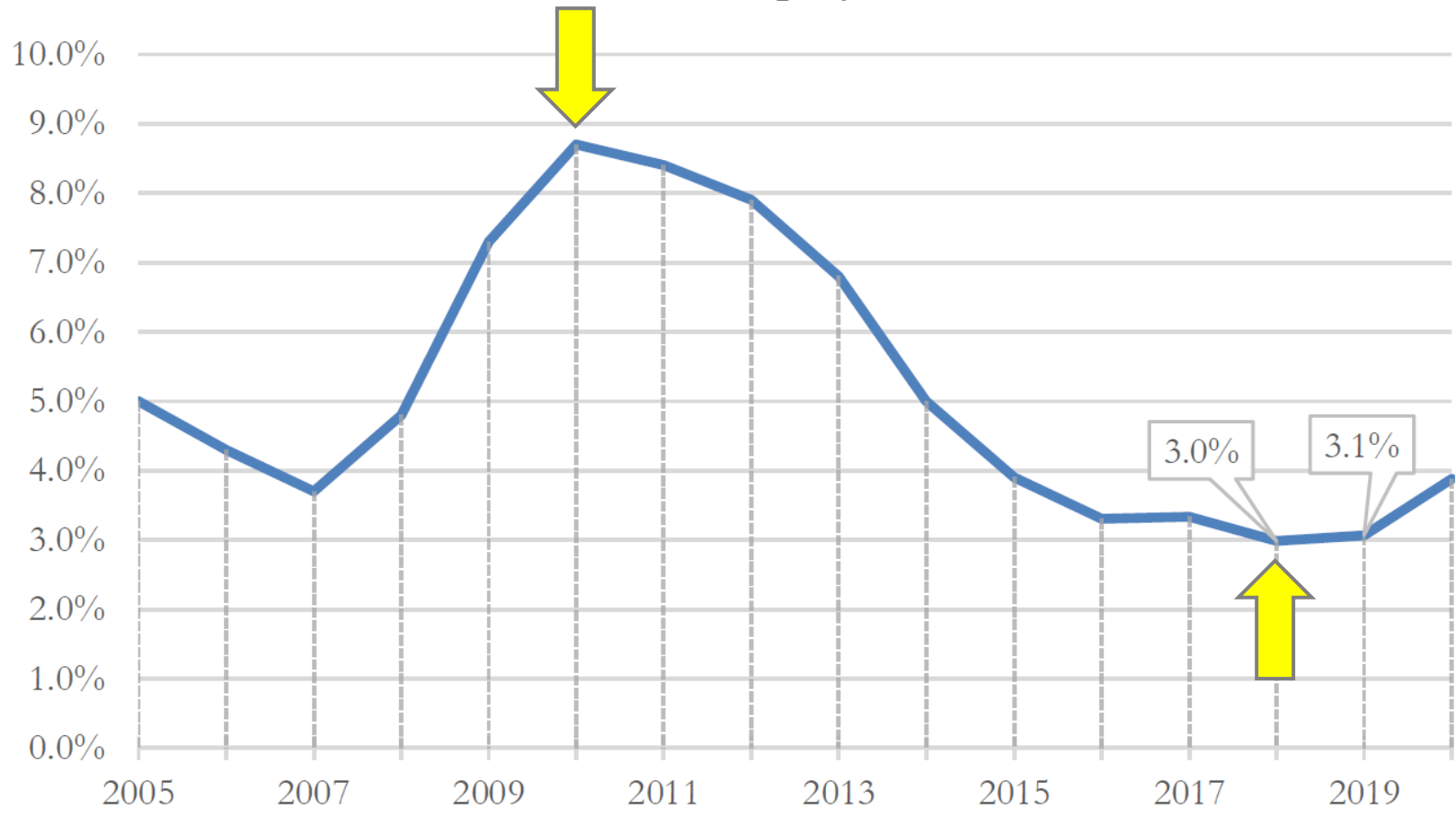
Source: Governor Hickenlooper's Budget Request for FY 2018-19, November 1, 2017

# FY 2018-19 General Fund Request (In Millions) and Percent of Total






Source: Governor Hickenlooper's Budget Request for FY 2018-19, November 1, 2017

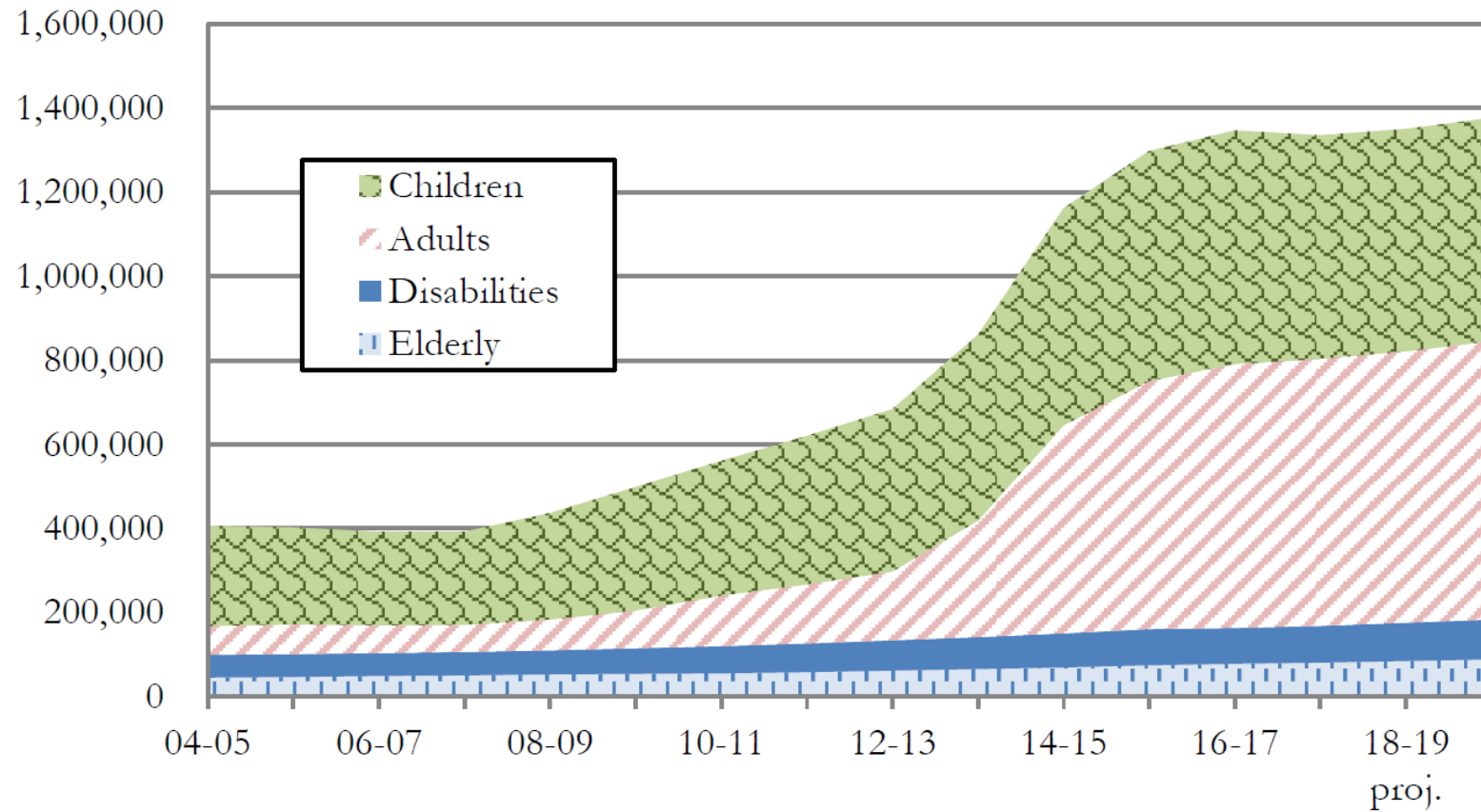
# Colorado Unemployment Rate



*Fiscal Year 2018-19 Budget Request: Department of Health Care Policy and Financing*

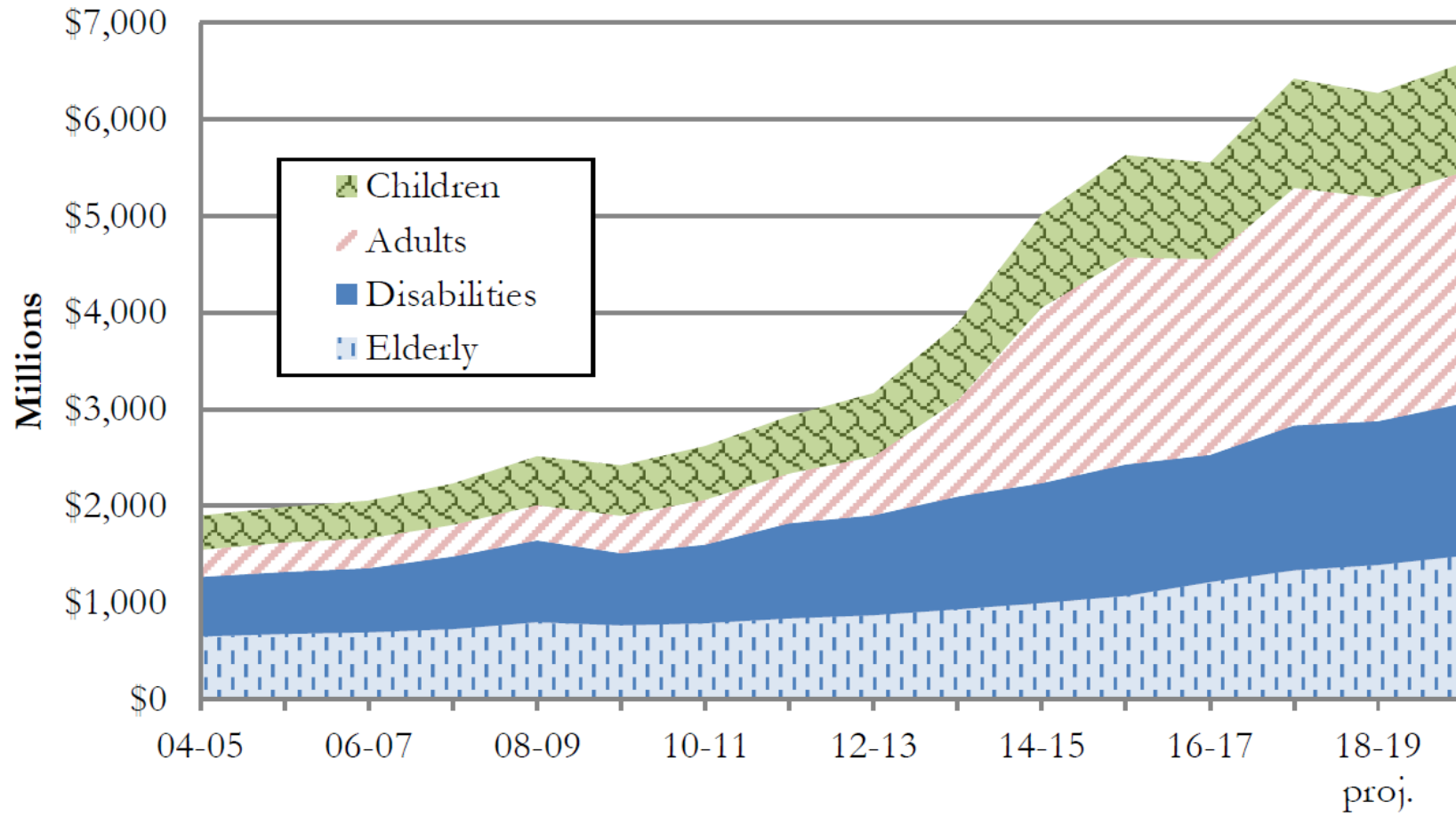
<b>Fiscal Year</b>	<b>Medicaid Caseload</b>	<b>Growth Rate</b>	<b>Level Growth</b>	
FY 2005-06	402,218	-0.94%	(3,806)	
FY 2006-07	 392,228	-2.48%	(9,990)	
FY 2007-08	391,962	-0.07%	(266)	
FY 2008-09	<b>97%</b>	436,812	11.44%	44,850
FY 2009-10		498,797	14.19%	61,985
FY 2010-11	560,759	12.42%	61,962	
FY 2011-12	619,963	10.56%	59,204	
FY 2012-13	 682,994	10.17%	63,031	
FY 2013-14	860,957	26.06%	177,963	
FY 2014-15	<b>75%</b>	1,161,206	34.87%	300,249
FY 2015-16		1,296,986	11.70%	135,829
FY 2016-17		1,346,174	3.79%	49,188
FY 2017-18 Projection	 1,335,347	-0.80%	(10,827)	
FY 2018-19 Projection	1,350,445	1.13%	15,098	
FY 2019-20 Projection	1,376,429	1.92%	25,984	

## Medicaid Enrollment

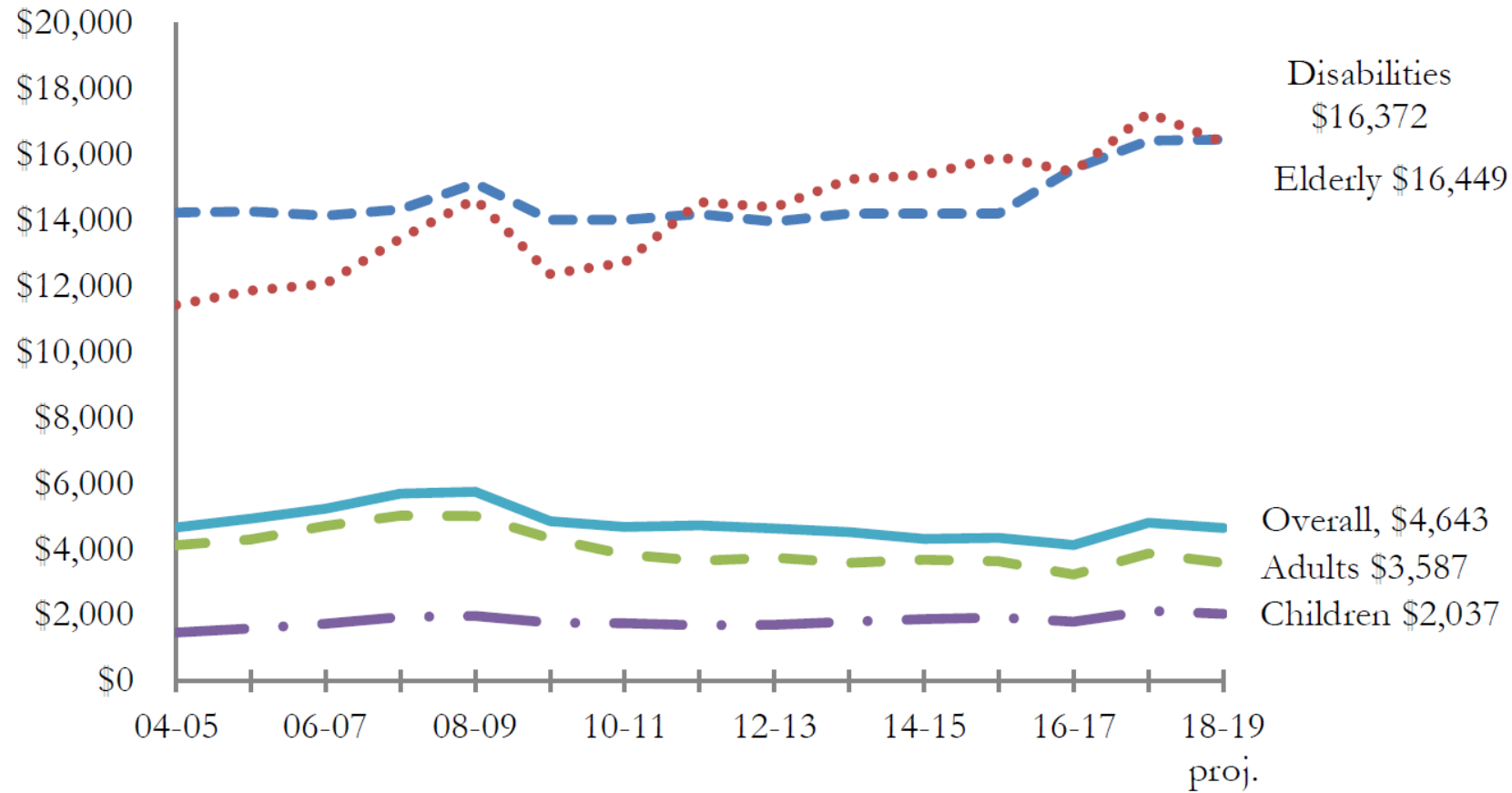




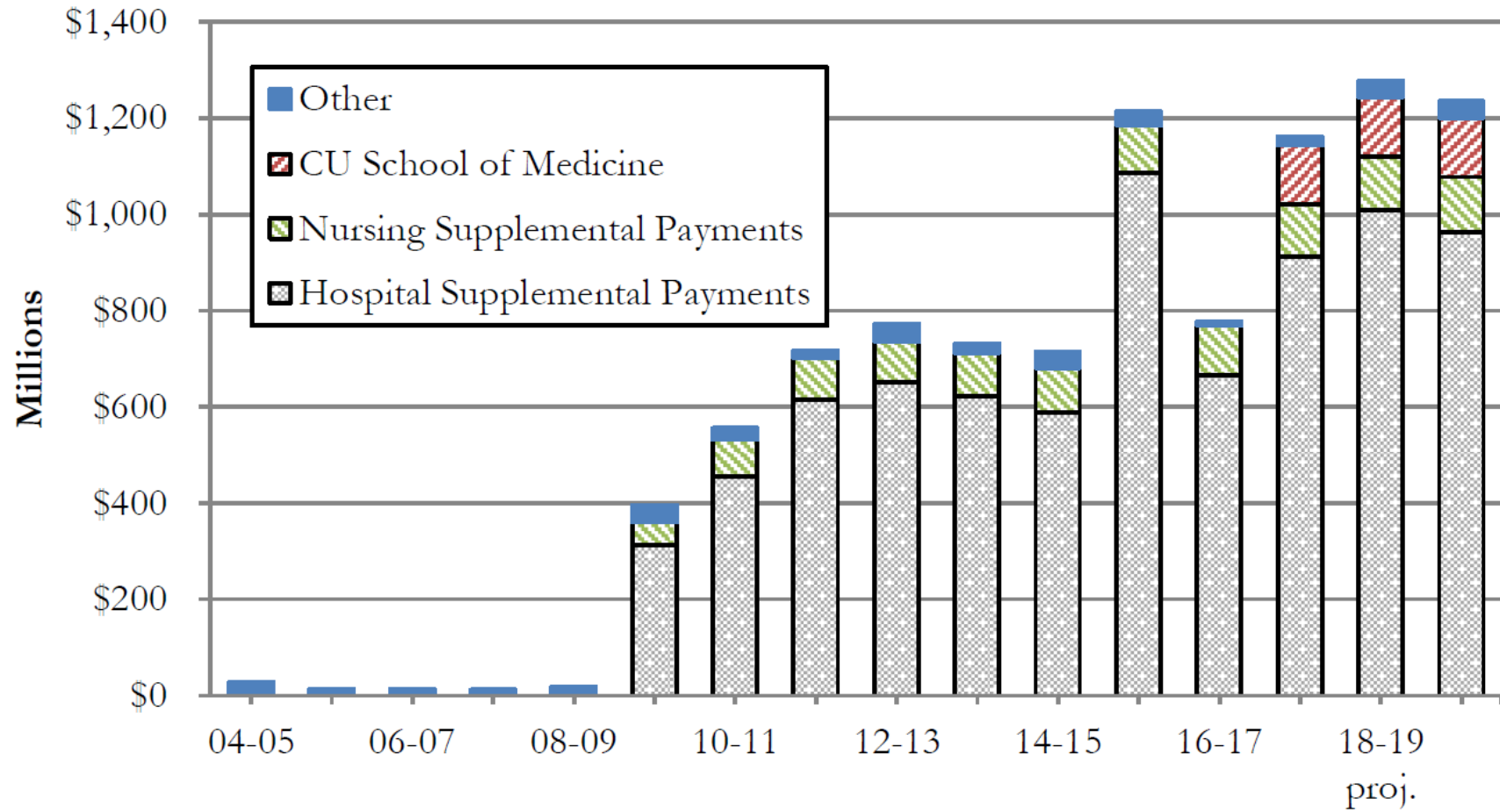
## Medical Services Premiums Expenditures



## Per Capita Medical Services Premiums



## Special Financing



Thank you!

