



**NoCo**  
INSPIRE

Powered by the Larimer County  
Work-Based Learning Alliance

# Collaboration of Public Partners

## Larimer & Weld County Work-Based Learning (WBL) Alliances

- ❖ Our Mission - To align education and workforce to increase sustainable community access to work-based learning by removing barriers and sharing resources.
- ❖ Our “Why” – To connect with businesses in an effort to address their talent needs.

*Our partners:*

Larimer and Weld public partners that spans education, workforce and non-profits.

# Larimer & Weld WBL Alliance



## Collaborating to support Talent 2.0:

- Connecting employers to local talent
- Helping to build awareness of local job opportunities and employers
- Improve alignment between education and workforce
- Creating business engagement in talent development

# Business Engagement



## Larimer and Weld WBL Alliance Business Engagement Objectives:

- Sharing of public partner best practices within the Alliance
- Fostering an environment where partners can connect business with other Alliance partners to solve workforce challenges
- Creating shared business language
- Utilizing NoCo Inspire as a tool to educate about work-based learning activities and to connect businesses to talent

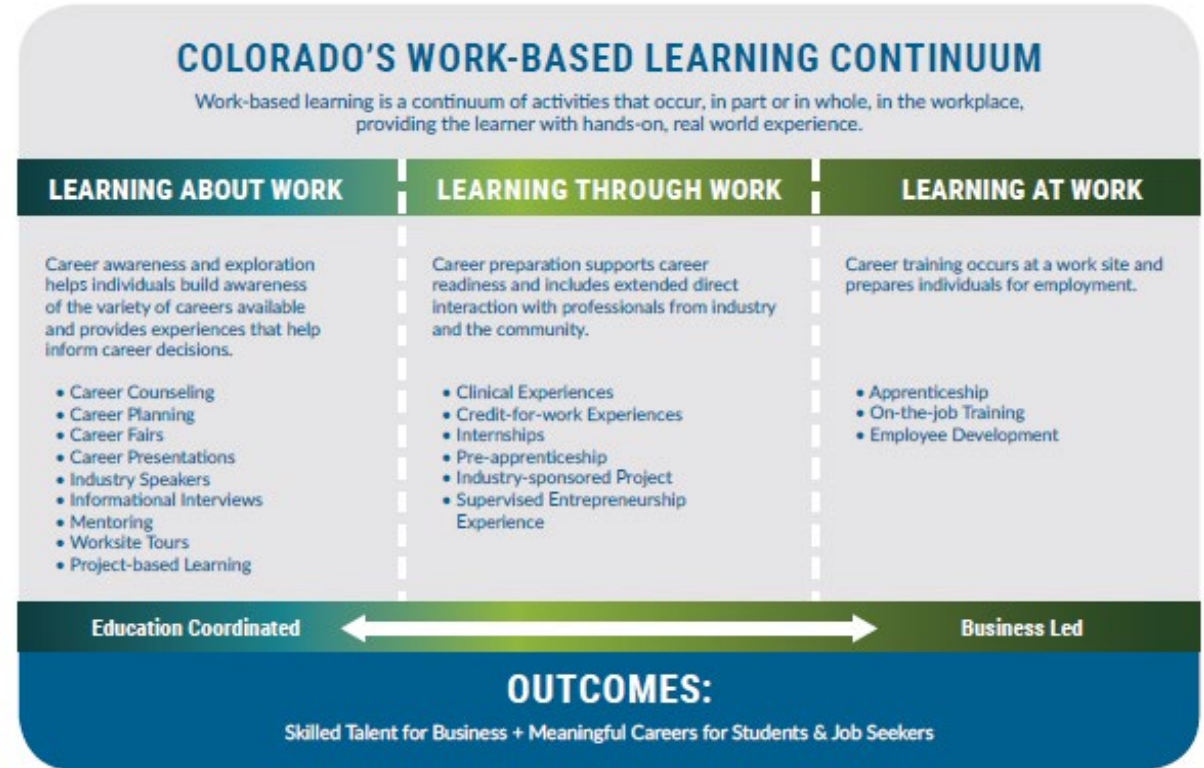
# Larimer & Weld WBL Alliance Work

## Work-based Learning Continuum Alignment:

*Learning About Work* – Build Industry Awareness and Exposure

*Learning Through Work* – Get Strategic with Hiring and Onboarding

*Learning At Work* – Develop and Retain your Current Workforce



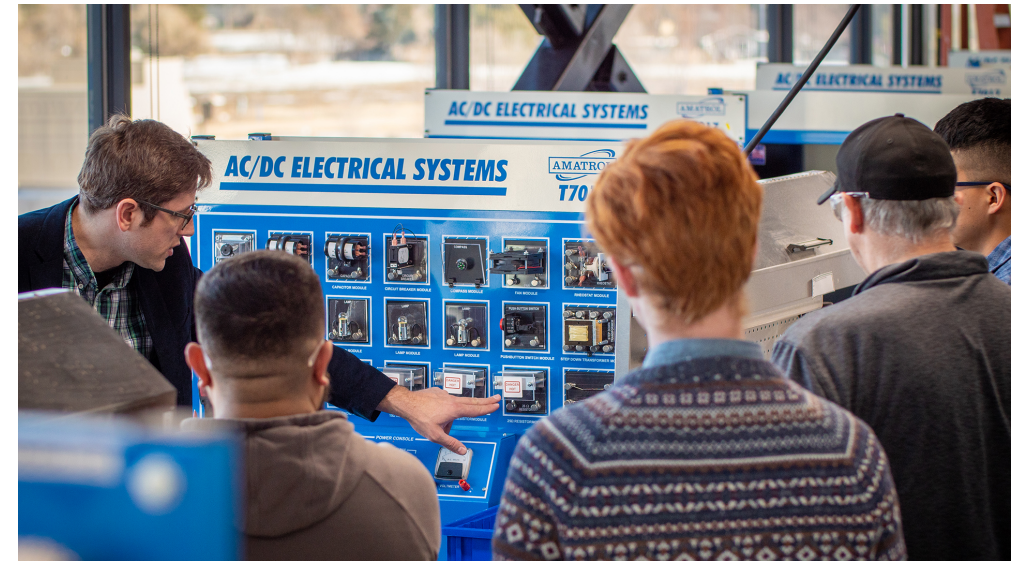


# Introducing NoCo Inspire

## Businesses in Northern Colorado Asked for an Easier Way to Access Work-based Learning Opportunities!

With the support of Fort Collins Chamber of Commerce and Weld County Partners:

- Hosted multiple employer round-tables to discuss WBL successes and challenges in the community
- Weld and Larimer collaborated and created [NoCo Inspire](#) – a one-access point for all things work-based learning related



# How can we help?

## Q & A

